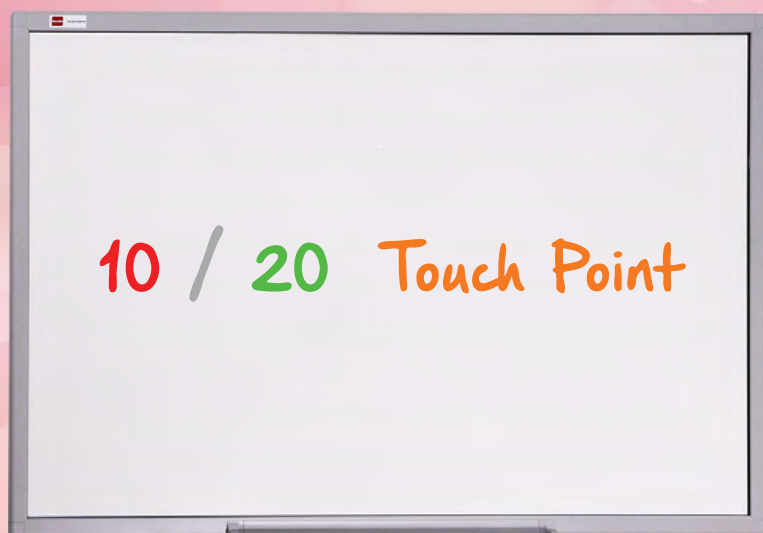


# INFRARED INTERACTIVE WHITEBOARD



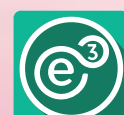
**ANTI-  
SCRATCH**



**EASY CLEAN  
SURFACE**



**MULTI-TOUCH**



**CERAMIC  
SURFACE**

## Multi-Touch Detection

Multi-Touch Board is the latest interactive whiteboard system that enhances interactive teaching and collaborative learning. This truly multi-touch whiteboard system is user-friendly and without additional setting on multi-user mode.



**Wireless Connection**  
(Optional)

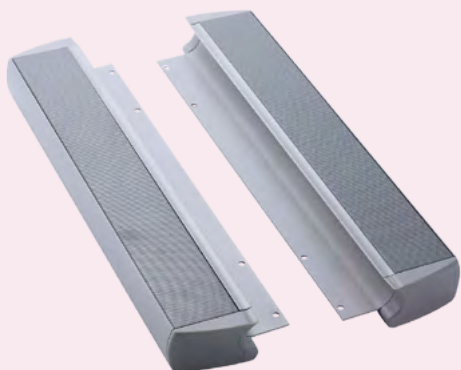
Wireless Connection - Less Cables, More Flexible!

Model	69"	83"	87"	94"	101"	107"
Model No.	DTO-i10-69s DTO-i10-69c	DTO-i10-83s DTO-i10-83c	DTO-i10-87s DTO-i10-87c	DTO-i10-94s DTO-i10-94c	DTO-i10-101s DTO-i10-101c	DTO-i10-107s DTO-i10-107c
Multi-Touch Detection	10 / 20 Points Detection (Finger Touch)					
Touch Technology	IR Cell LED Optical					
Resolution	32768 x 32768					
Finger Touch Accuracy	± 1 mm					
Touch Durability	Unlimited					
Interactive Whiteboard Surface	Ceramic-steel (E3) / Pre-painted Steel					
Interface	USB 2.0 (HID Compliant) or 2.4 GHz Wireless (Optional Item)					
Operating System	Windows 10 / 8.1 / 7 / Vista / XP ; Mac ; Linux					
Power Consumption	USB 5V / Operating Current <250mA					
Certificates	FCC, CE, RoHS					
Net Weight	16 KG	18.8 KG	21 KG	24 KG	28 KG	30 KG
Gross Weight	25 KG	31 KG	35 KG	38 KG	43 KG	48 KG
Board Dimensions (L) x (H) x (D) mm	1408 x 1082 x 32	1694 x 1286 x 32	1817 x 1286 x 32	2062 x 1245 x 32	2266 x 1245 x 32	2429 x 1245 x 32
Box Dimensions (L) x (H) x (D) mm	1950 x 1400 x 70	1950 x 1400 x 70	1950 x 1400 x 70	2150 x 1400 x 80	2360 x 1400 x 80	2650 x 1400 x 80
<b>Included Items</b>						
Stylus x 2, IWB Software x 1, User Manual x 1, 6m USB Cable x 1, Wall Mount Kit x 1, HDMI-USB Adapter Cable x 1						
<b>Optional Accessories</b>						
Normal Pen Tray, Interactive Pen Tray, Polyvision e3 Ceramic Surface, Electric Mobile Stand, 2.4G Hz Wireless Kit, Sound Bar System (20W/40W)						

\* Products listed in this Hanshin catalogue are based on the September 2017 Lineup. Designs, models and specifications are subject to change without notice.

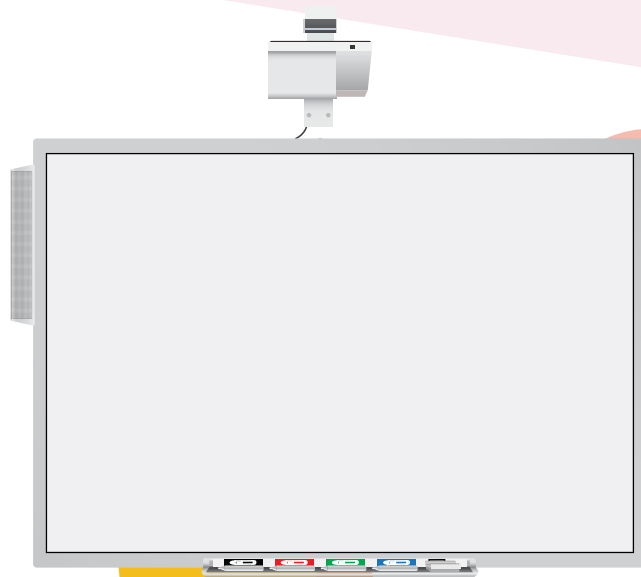
## SOUND BAR SYSTEM

20W / 40W



Model	Sound Bar System
Sound Power (RMS)	A Type: 10 x 2 = 20W B Type: 20 x 2 = 40W
Frequency	45Hz - 18KHz
Connectivity Input	USB (Micro port to PC) IWB / Interactive Pen-Tray
Power Consumption	12V 4A
Audio Hub Dimension	107L x 65W x 22H mm
Speaker Dimension	410(L) x 55(W) 42(D) mm

## INFRARED IWB ACCESSORIES



### INFRARED INTERACTIVE PEN TRAY



#### Simple & Easy

The Interactive Pen Tray enables users to easily select different pen color or eraser without switching buttons within the software. Users can pick up any pen (Black / Red / Green / Blue) or an eraser from the Interactive Pen Tray and the software will identify which color is selected. The pens do not require battery to use.

**POWERFUL AUDIO SYSTEM**  
The latest 40W sound bar system with new design Audio Hub gave a quality sound effect.



### WIRELESS RECEIVER

